

B9 2.9T/3.0T Density Motor Mounts**034 MOTOR SPORT**

034Motorsport's Density Motor Mounts are manufactured with 60 durometer rubber to limit unwanted noise and vibration transfer into the cabin. Density Motor Mounts are optimized void-free and fluid-free, eliminating the slop and excess movement associated with the factory mounts, resulting in improved shifting feel and driving dynamics while greatly improving long term durability and longevity.

Installation Spiciness Rating: HOT

Installation of your 034Motorsport Density Line Motor Mounts are a straightforward process that will take approximately 6-8 hours to complete.

Supplied Parts:

- (2x) 034 Density Motor Mounts

Tools Needed:

- 16mm Socket
- 13mm Socket
- 10mm Socket
- 5mm Socket
- 16mm Wrench
- 14mm Triple-square bit
- 12mm Triple-square bit
- 10mm Triple-square bit
- T60 Torx bit
- T30 Torx bit
- T25 Torx bit
- T20 Torx bit
- 4mm Allen bit
- Prybar
- Forked trim tool
- Hand snips

More Tools:

- Flathead screwdriver
- Torque Wrench

Getting Started

Confirm you have received all the parts included with your purchase by reading the complete guide, if there are missing components,

About This Guide

This Install Guide documents the installation process on a B9 Audi RS5. There may be minor differences depending on specific vehicle, market, options, etc.

Install Steps

Step 1

Lift your car.

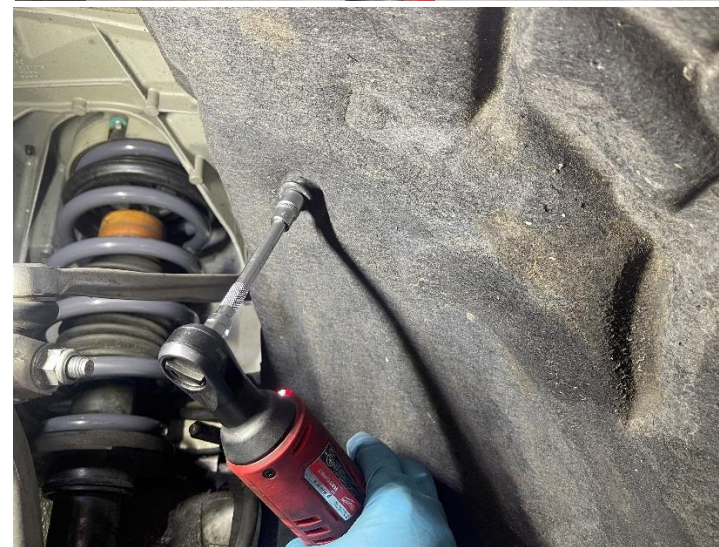
Step 2

Remove the front wheels.



Step 3

Using a combination of T25, T20, and a 10mm socket, remove the hardware from each wheel liner.



Step 4

Using a 10mm socket, remove the hardware from the axle guard and set it aside.



Step 5

Fold the wheel liner out of the way.



Step 6

Using a combination of T30, T25, and a 13mm socket, remove the hardware from all the underbody trays and set them aside.



Step 6 cont.



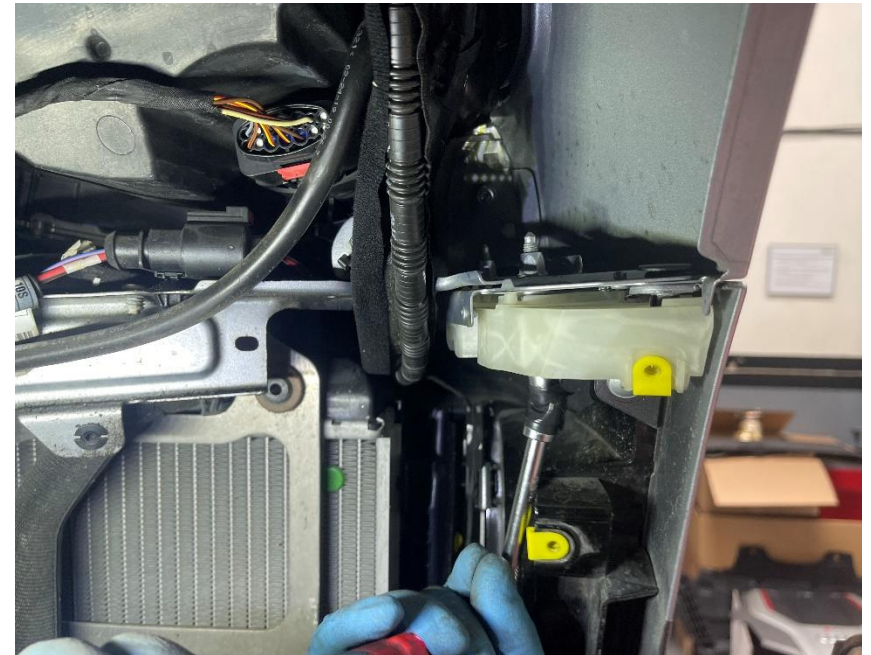
Step 7

Remove the headlight drain tube from the side trim panel.



Step 8

Using a 10mm socket, remove the hardware connecting the front bumper to the fender.

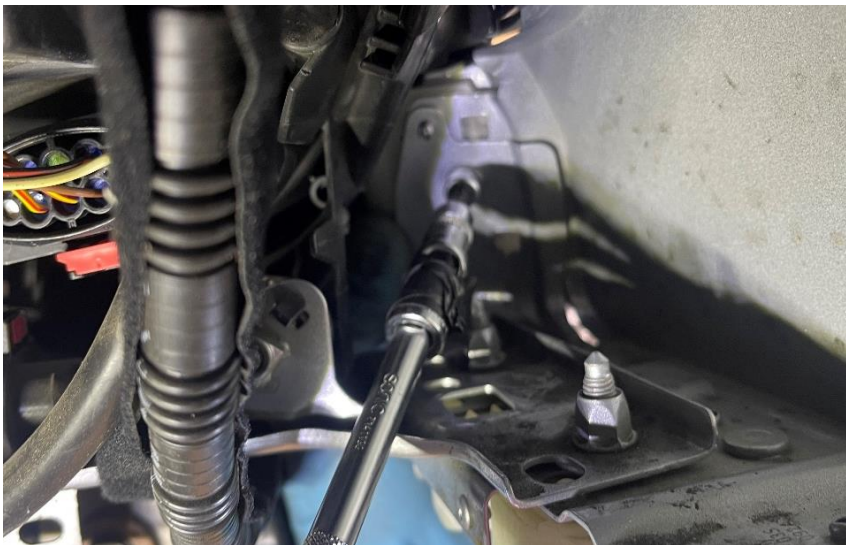


Step 9

Using a fork tool, remove the body clip near the bumper bolts.

**Step 10**

Using a 10mm socket, remove the hardware from the back of the bumper support. (Ours has an Allen head bolt)

**Step 11**

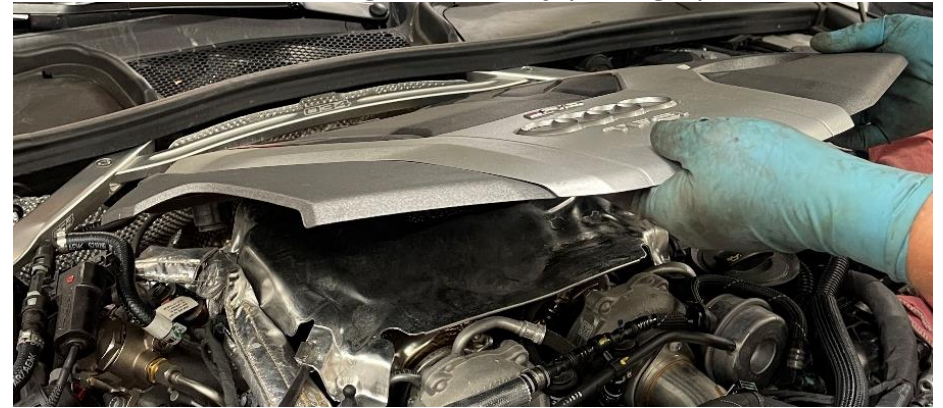
Lower the car back down a few feet off the ground.

Step 12

Open the hood.

Step 13

Remove the engine cover by pulling up on it.

**Step 14**

Using a 13mm socket, remove the ball mounts for the engine cover.



Step 15

Remove clip from the heat shield.



Step 16

Remove the hood release latch.



Step 17

Using a trim tool, remove the clips from the radiator cover.



Step 18

Remove the radiator cover.



Step 19

Using a 4mm Allen, remove the hardware from the air duct.



Step 20

Using a flathead screwdriver, loosen the hose clamps on the coupler to the turbo inlet.



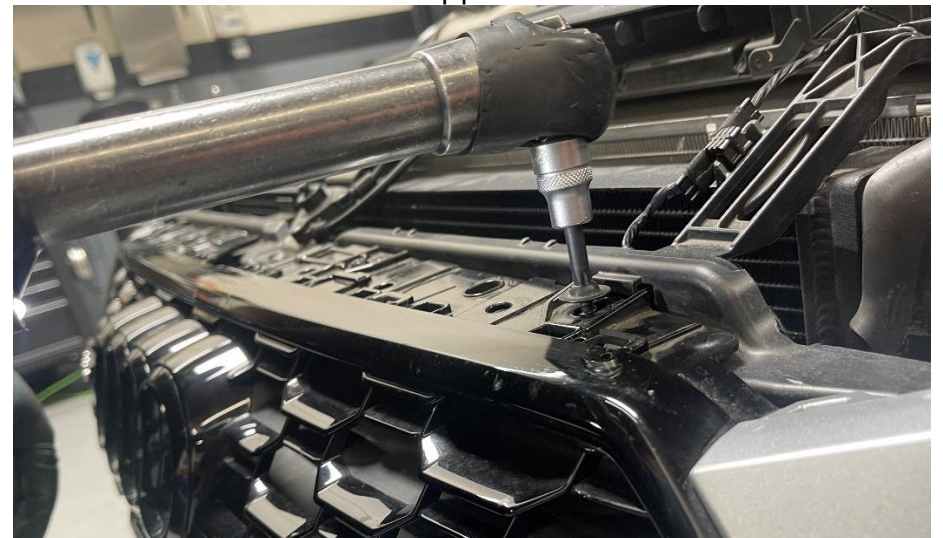
Step 21

Remove the airbox/air duct assembly from the engine bay.



Step 22

Using a T30 bit, remove the hardware from the radiator support.



Step 23

Carefully remove the front bumper.



Step 24

Disconnect the headlight washer connector.



Step 25

Using a 13mm socket and wrench, remove the hardware from the front crash bar.



Step 26

Remove the upper air guides from the radiator support.



Step 27

Using a T30 Torx bit, remove the hardware securing the crash bar from the radiator support.



Step 28

Disconnect the headlight washer hose. (Use a drip tray)



Step 29

Disconnect the airbag sensor.



Step 30

Using a prybar, remove the crash bar from the mounting bracket.

Step 31

Remove the harness clip from the crash bar.



Step 32

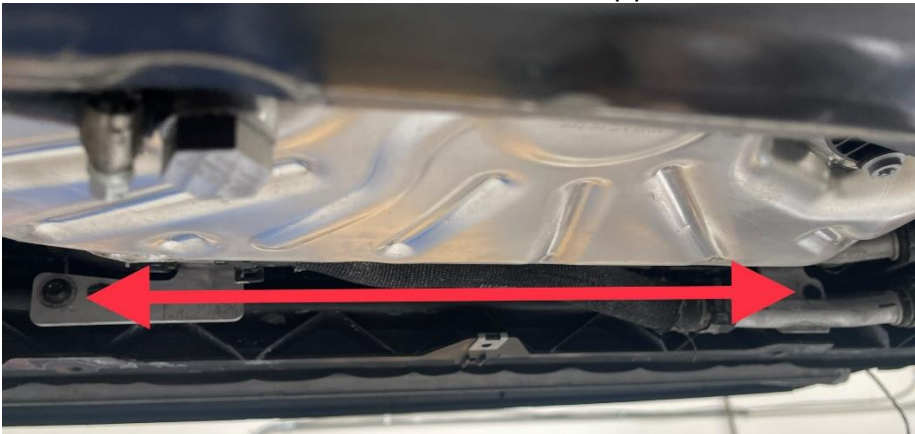
Using a 16mm socket, remove the hardware from crash bar mounting brackets.

**Step 33**

Use some long studs or bolts to allow the car to go into service mode.

Step 34

Using a T30 Torx, remove the hardware from the coolant line brackets on the radiator support.

**Step 35**

Using a 10mm socket, remove the hardware securing the coolant line to the oil pan.

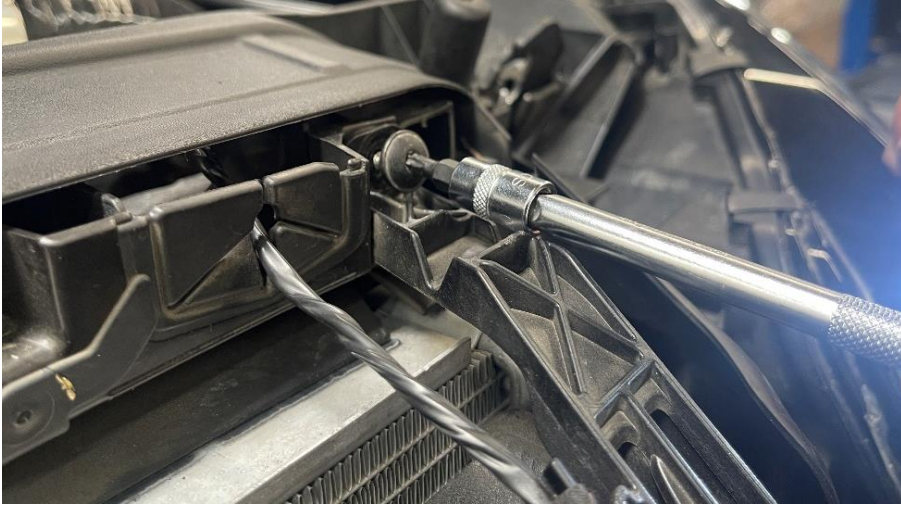
**Step 36**

Using a T25 Torx, remove the hardware from the hood release bracket.

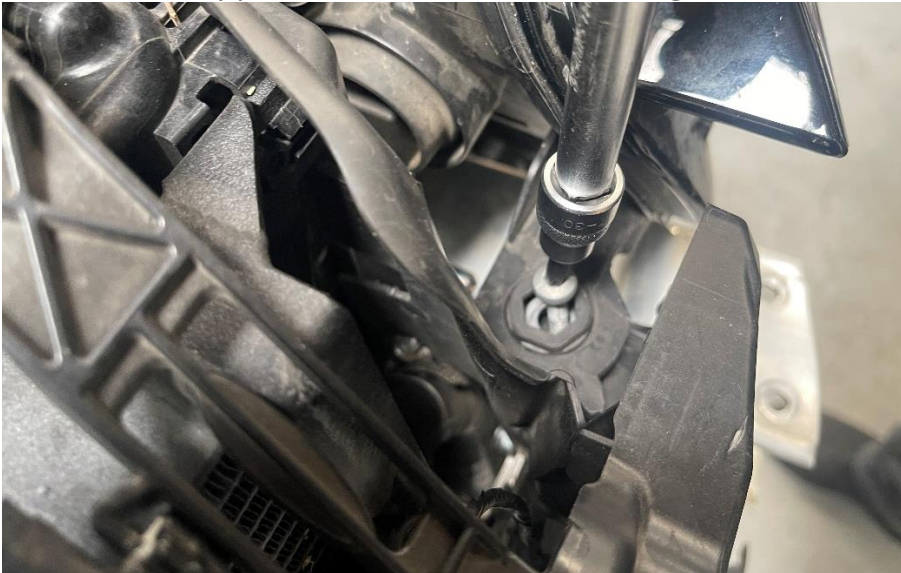


Step 37

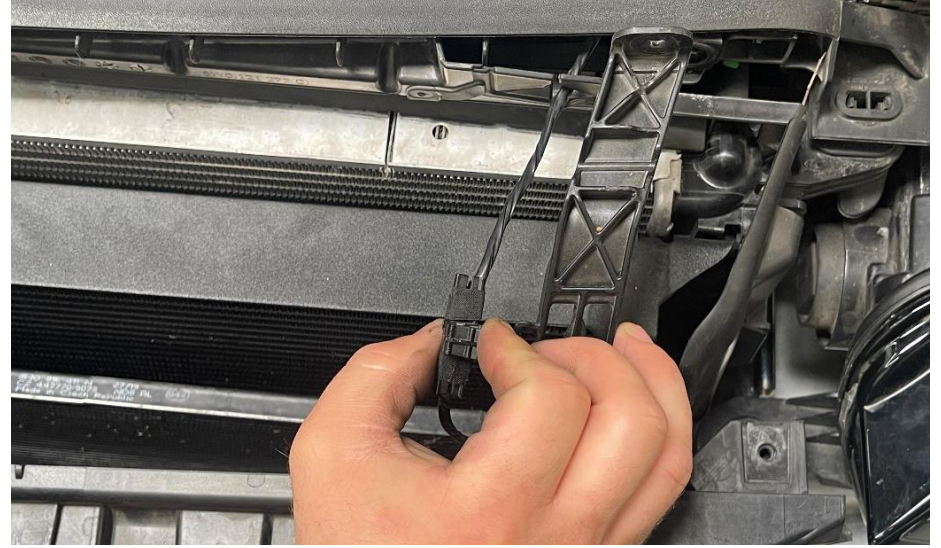
Using a T25 Torx, remove the hardware from the radiator support bracket.

**Step 38**

Using a T30 Torx bit, remove the hardware from the radiator support brackets near the headlight.

**Step 39**

Remove the harness clip from the radiator support bracket.

**Step 40**

Using a T30 Torx bit, remove the hardware from the headlight.



Step 40 cont.**Step 41**

Unplug the connector from the back of the headlight.

**Step 42**

Remove the drain tube from the back of the headlight.

Step 43

Carefully remove the headlights.

Step 44

Using a T30 Torx bit, remove the hardware securing the radiator support to the chassis.

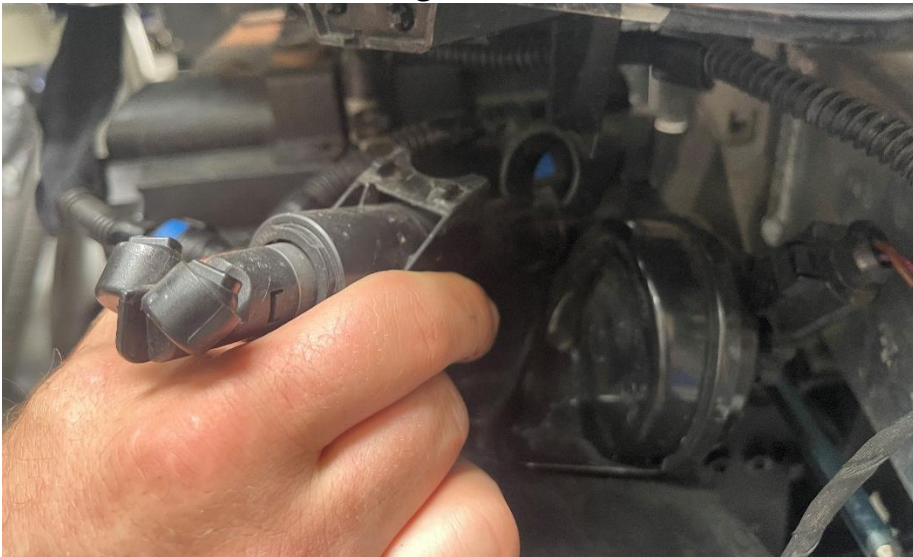


Step 45

Separate the harness clip behind the radiator support.

**Step 46**

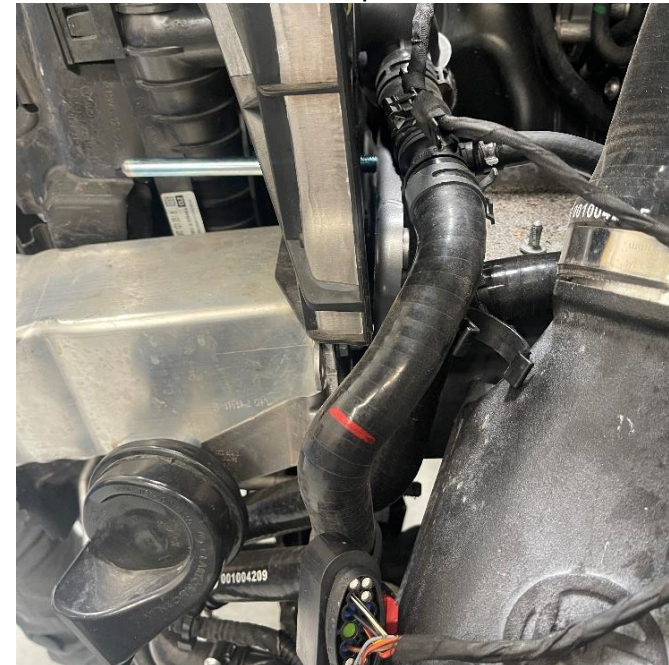
Disconnect the headlight washer from its mount.

**Step 47**

Pull the front clip into service mode.

**Step 48**

Loosen the coolant hose clamp and drain into a drip tray.



Step 49

Using a T60 Torx bit, loosen the primary belt tensioner.



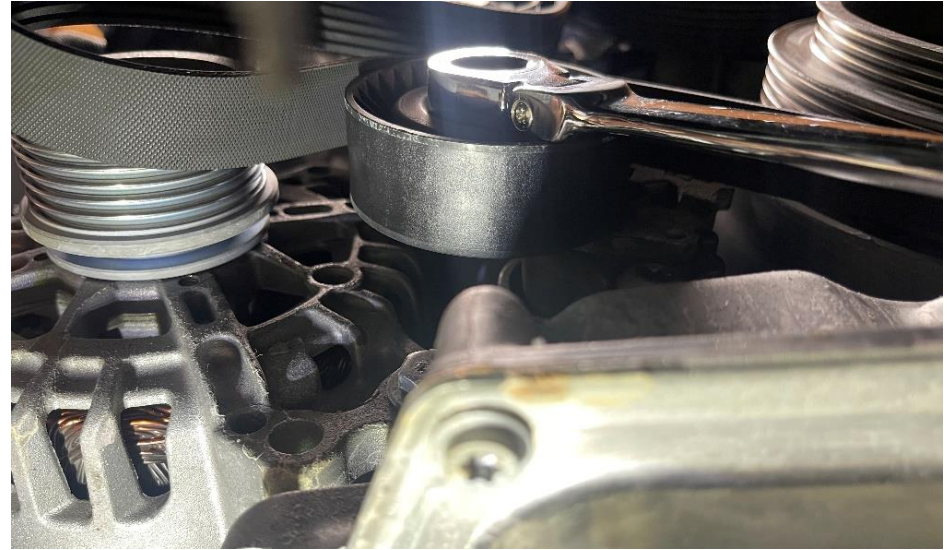
Step 50

Slide the belt off the crank pulley.



Step 51

Using a 16mm wrench, loosen the alternator tensioner.



Step 52

Using a 12mm triple-square, remove the hardware from the engine support bearing.



Step 53

Snip the zip-tie securing the wiring harness near the front sway bar.

**Step 54**

Open the trunk.

Step 55

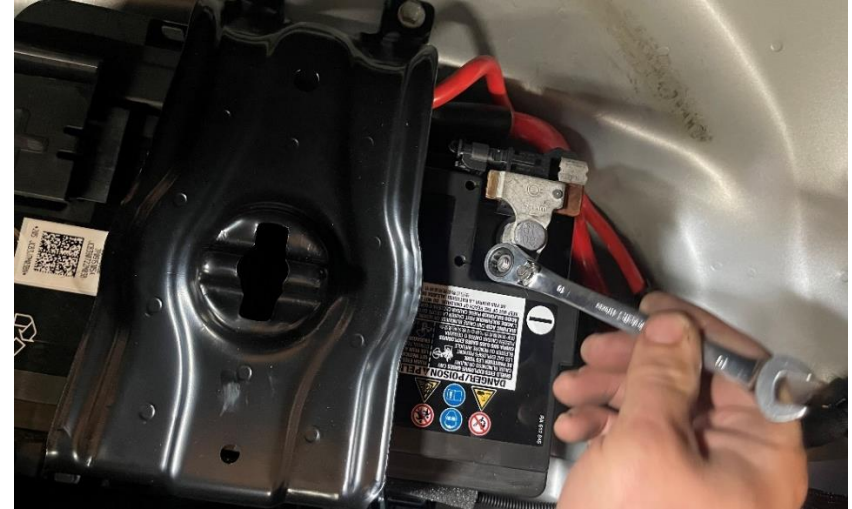
Open the spare tire cover.

**Step 56**

Remove the spare tire.

Step 57

Using a 10mm wrench, loosen the negative battery terminal.

**Step 58**

Using an engine hoist, support the engine through the designated lift points.



Step 59

Using a 14mm triple-square, remove the hardware from the engine mount brackets on **both sides**.

**Step 60**

Using a 13mm socket, remove the nut securing the alternator ground strap.

**Step 61**

Pull the ground strap off the mounting stud.

**Step 62**

Using a 13mm wrench, remove the mounting hardware from the alternator.



Step 63

Using a prybar, separate the alternator from its mount.

**Step 64**

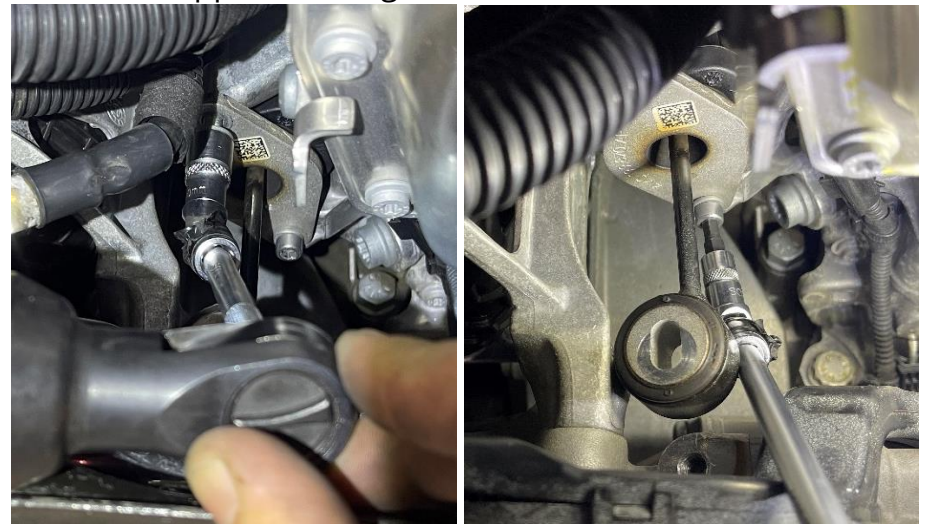
Disconnect the harness connector from the alternator.

**Step 65**

Remove the alternator from the engine bay.

**Step 66**

Using a 5mm socket, remove the hardware from the engine support bearing. (One of ours is an Allen)



Step 67

Using a 13mm socket, remove the hardware from the transmission mount.

**Step 68**

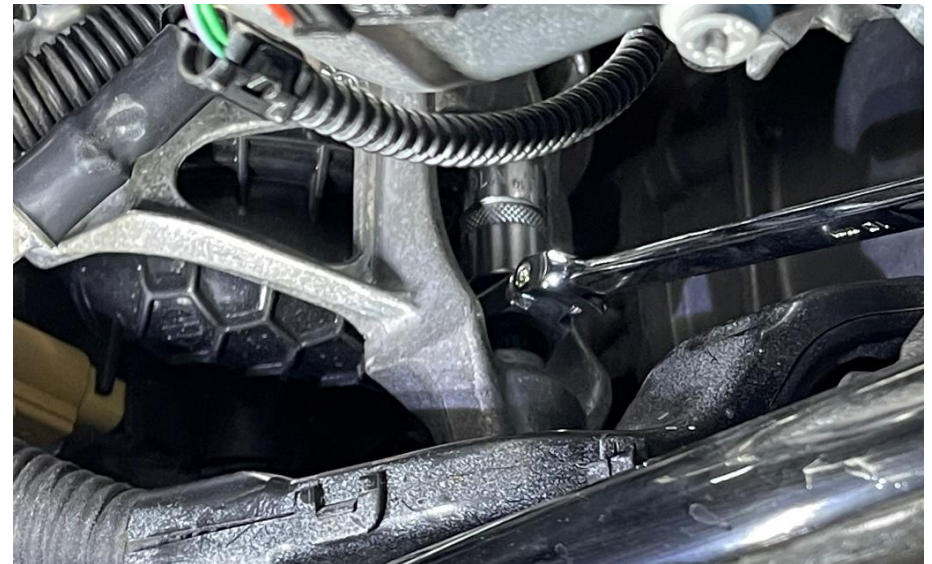
Using a flathead screwdriver, loosen the hose clamp in the throttle body hose and disconnect the hose.

**Step 69** (nice)

Carefully lift the engine up, off the mounts.

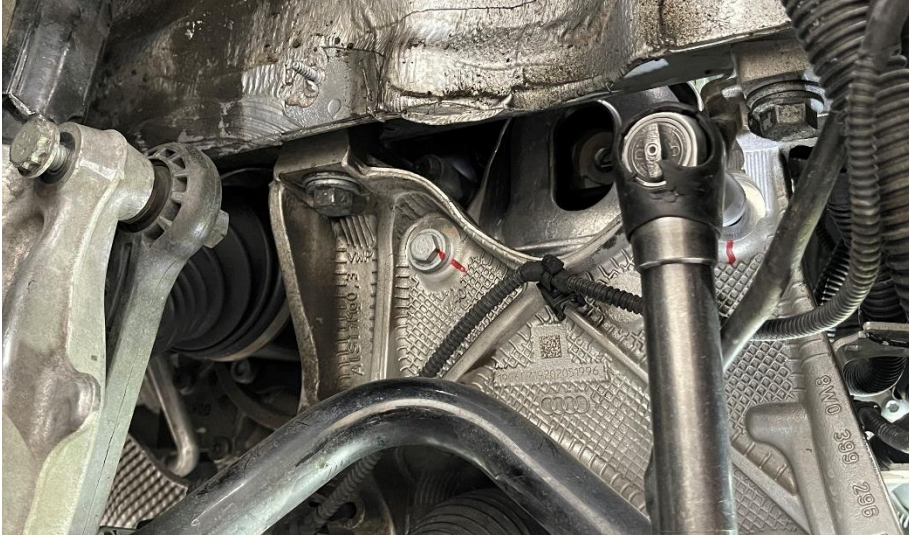
**Step 70**

Using a 10mm triple-square, remove the hardware securing the motor mount to the subframe.



Step 71

Using a 13mm socket, remove the hardware from the side of the motor mount securing it to the upper subframe.

**Step 72**

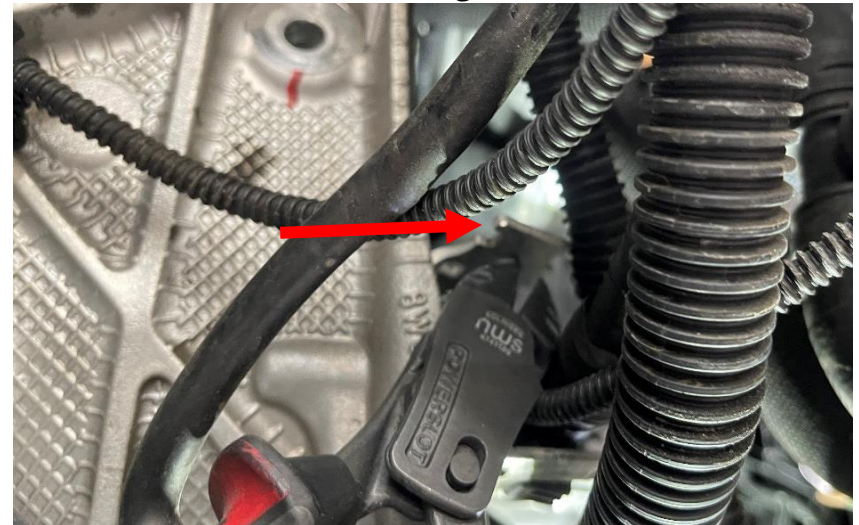
Disconnect the harness connector from the motor mount.

**Step 73**

Using a 13mm socket, remove the nut securing the motor mount ground strap.

**Step 74**

Remove the zip-tie securing the wiring harness to the mounting tab.



Step 75

Extract the motor mount from the engine bay.



Step 76

Install the 034 Density line motor mount.



Step 77

Using a 13mm socket, install the hardware securing the motor mount to the upper subframe.
Torque to **30Nm**.



Step 78

Using a 10mm triple-square, install the hardware securing the motor mount to the subframe.
Torque to **55Nm**.



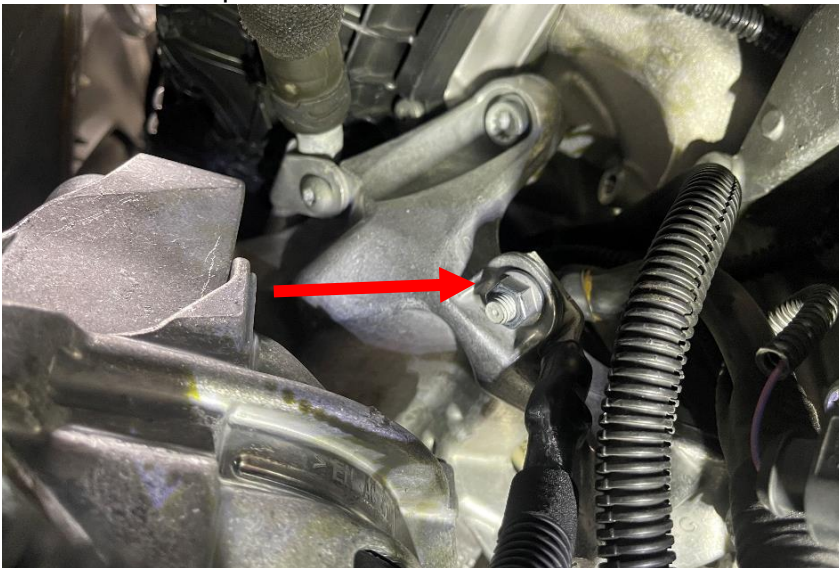
Step 79

Install the harness connector to the motor mount.



Step 80

Using a 13mm socket, reinstall the motor mount ground strap with the nut removed earlier.



Step 81

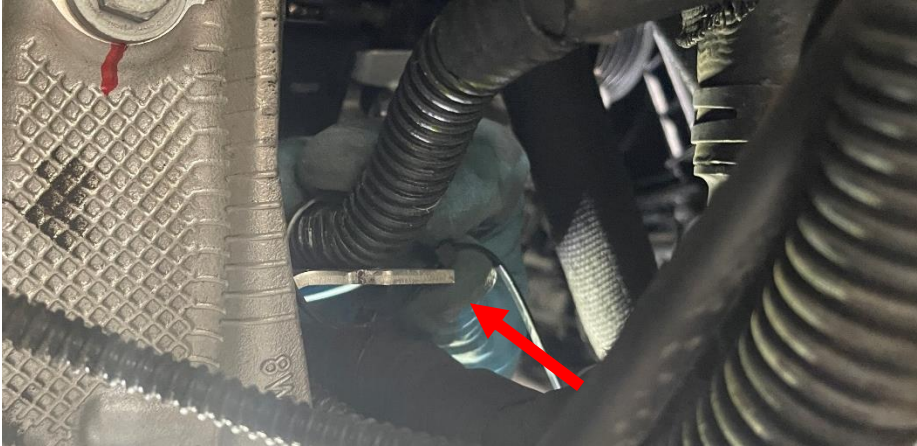
Using a 13mm socket, reinstall the alternator.

Torque to **23Nm**.



Step 82

Using a fresh zip-tie, secure the wire harness to the mounting tab.

**Step 83**

Reinstall the harness connector to the alternator.

**Step 84**

Using a 13mm socket, reinstall the alternator ground strap with the nut removed earlier.

Due to our upgraded intercooler, removing the drivers' side mount was much more involved. You might get away with skipping a few steps that we couldn't.

Step 85

Remove the air guides from the sides of the radiator support.

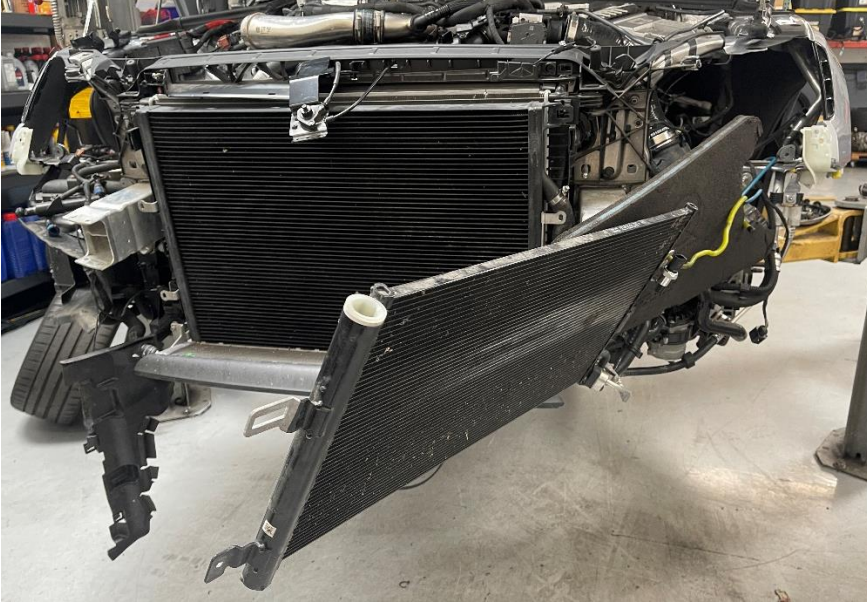
**Step 86**

Using a 6mm Allen, remove the hardware securing the AC condenser to the intercooler.



Step 87

Move the AC condenser to gain more range in service mode.



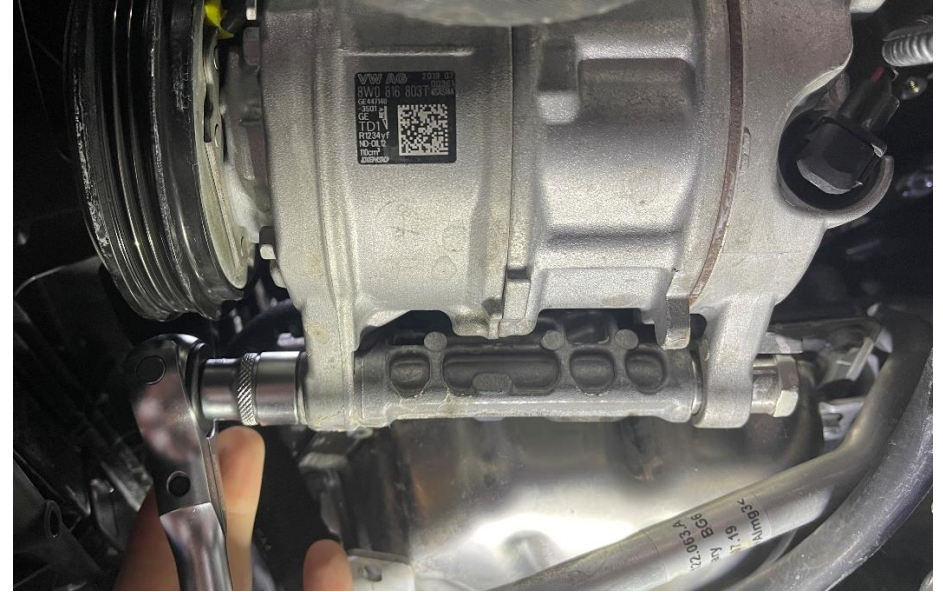
Step 88

Unplug the harness connector from the AC compressor.

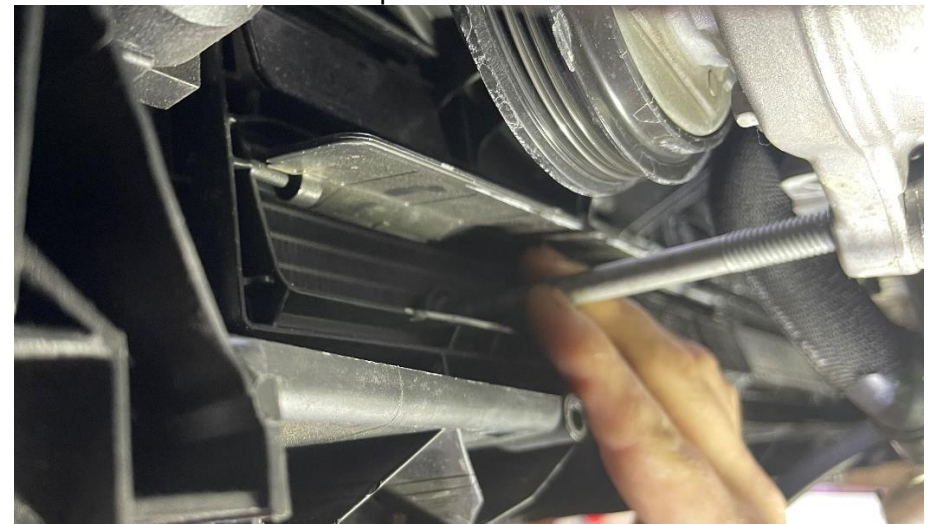


Step 89

Using a 16mm socket, remove the hardware from the AC compressor.



To remove the lower bolt, lift the air flap in the front bumper, and pull the bolt out.



Step 90

Using a prybar, remove the AC compressor. We used a hook to hold the weight instead of fully disconnecting the lines.

**Step 91**

Unplug the harness connector from the motor mount.

**Step 92**

Using a 10mm triple-square, remove the hardware securing the motor mount to the subframe.



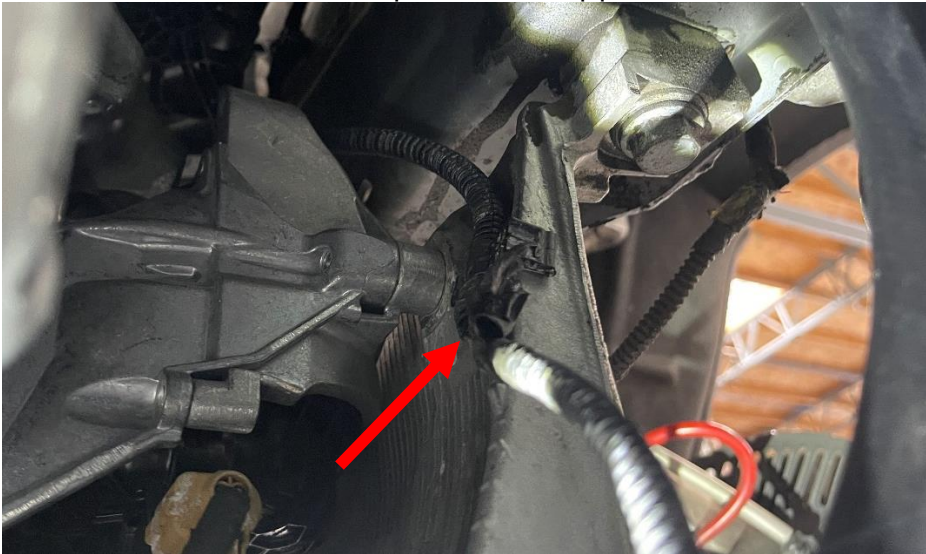
Step 93

Using a 13mm socket, remove the hardware from the side of the motor mount securing it to the upper subframe.



Step 94

Remove harness clip from the upper subframe.



Step 95

Extract the old motor mount from the engine bay.

Step 96

Install the 034 Density line motor mount.



Step 97

Using a 13mm socket, install the hardware securing the motor mount to the upper subframe.

Torque to **30Nm**.



Step 98

Using a 10mm triple-square, install the hardware securing the motor mount to the subframe.
Torque to **55Nm**.



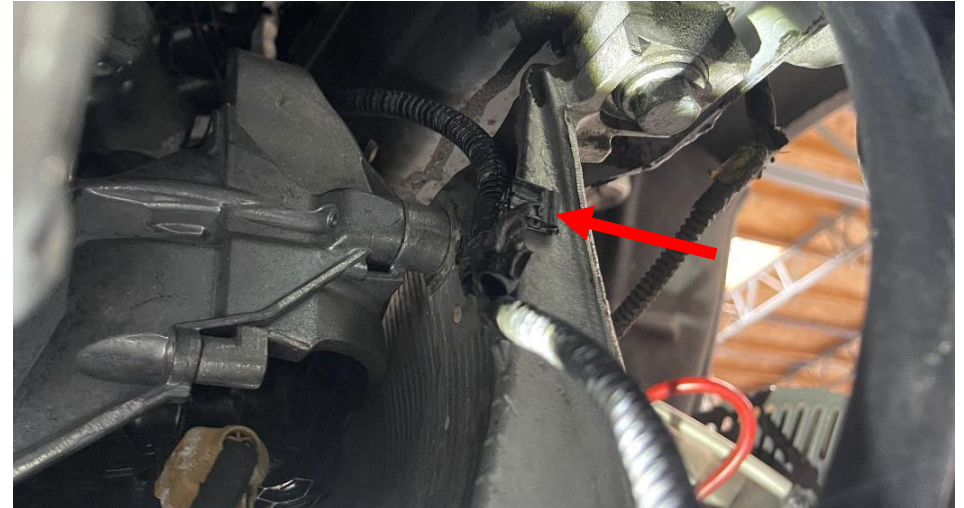
Step 99

Install the harness connector from the motor mount.



Step 100

Attach the harness clip back onto the upper subframe.



Step 101

Using a 16mm socket, reinstall the AC compressor. Use the same trick with the air flap in the front bumper for the lower bolt. Torque to **40Nm**.



Step 102

Plug in the AC compressor connector.



Step 103

Using a 6mm Allen, reinstall the AC condenser to the intercooler. Torque to **9Nm**.



Step 104

Reinstall the air guides onto the radiator support.

Step 105

Carefully lower the engine onto the motor mounts.



Step 106

Using a 14mm triple-square, reinstall the hardware to the engine mount brackets on **both sides**. Torque to **90Nm + 90°**



Step 107

Using a flathead screwdriver, tighten the hose clamp in the throttle body hose and disconnect the hose.



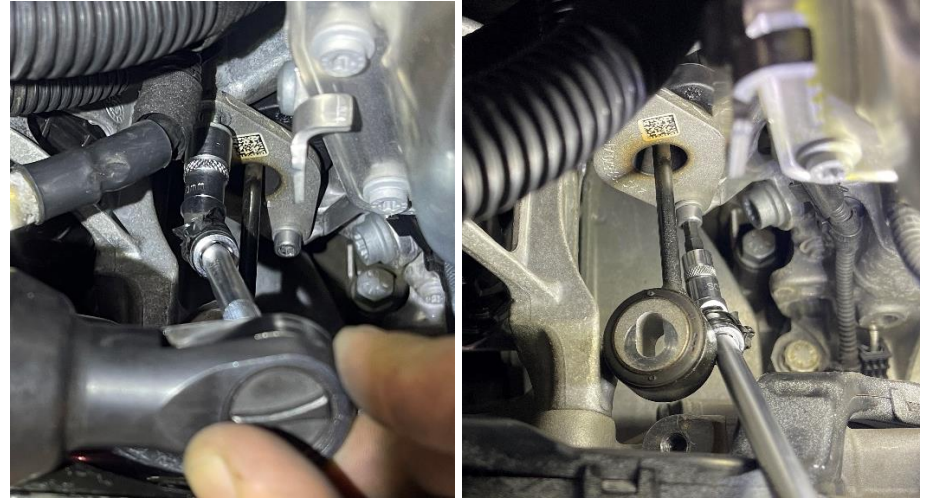
Step 108

Using a 13mm socket, reinstall the hardware for the transmission mount. Torque to **20Nm**.



Step 109

Using a 5mm socket, reinstall the hardware for the engine support bearing. (One of ours is an Allen)



Step 110

Using a 12mm triple-square, reinstall the hardware for the engine support bearing.



Step 111

Secure the wiring harness near the front sway bar with a new zip-tie.

Step 112

Using a 16mm wrench, compress the alternator tensioner and reinstall the belt.

**Step 113**

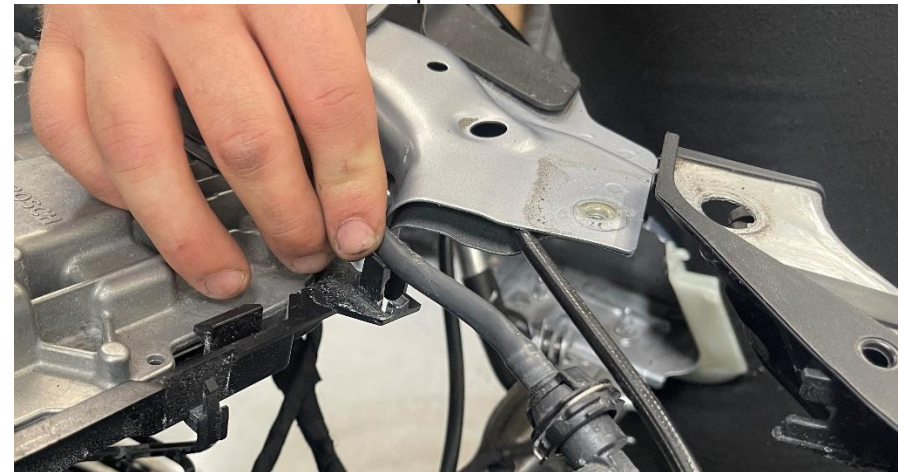
Using a T60 Torx bit, compress the primary belt tensioner and reinstall the primary serpentine belt.

**Step 114**

Tighten the coolant hose clamp.

**Step 115**

Take the front clip out of service mode.



Step 116

Reconnect the headlight washer to its mount.

**Step 117**

Attach the harness clip behind the radiator support.

**Step 118**

Using a T30 Torx bit, reinstall the hardware securing the radiator support to the chassis.

**Step 119**

Reinstall the drain tube into the back of the headlights.

Step 120

Plug the connector from the back of the headlights.



Step 121

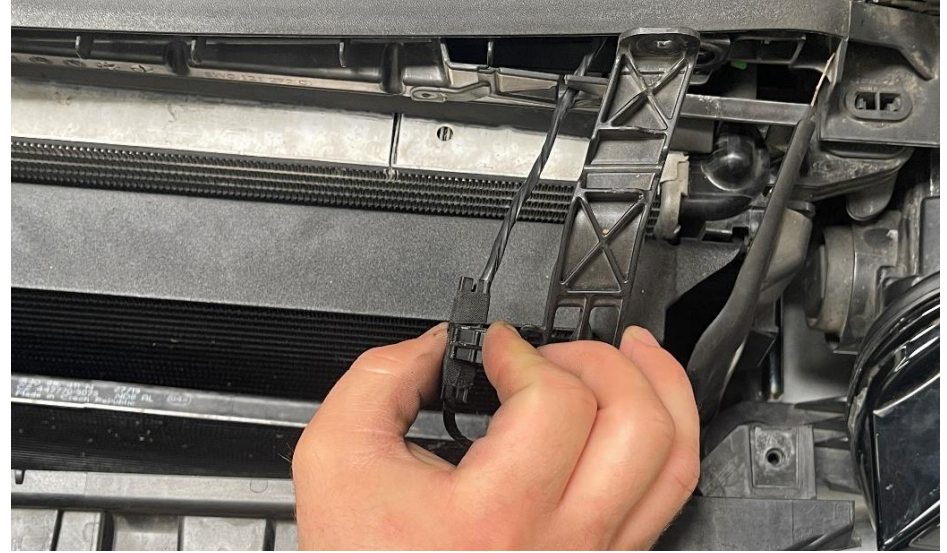
Carefully reinstall the headlights.

Step 122

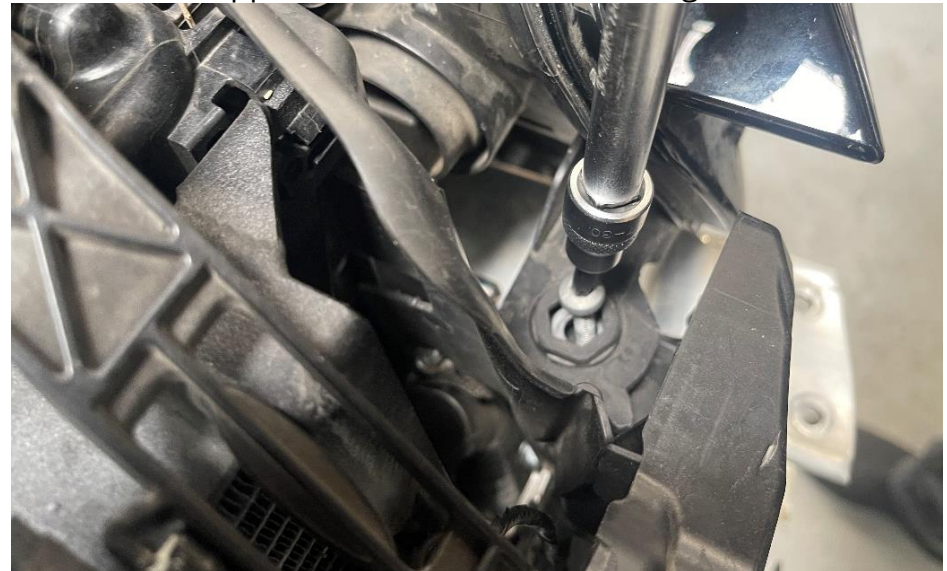
Using a T30 Torx bit, secure the headlights with the hardware removed earlier.

**Step 123**

Attach the harness clip to the radiator support bracket.

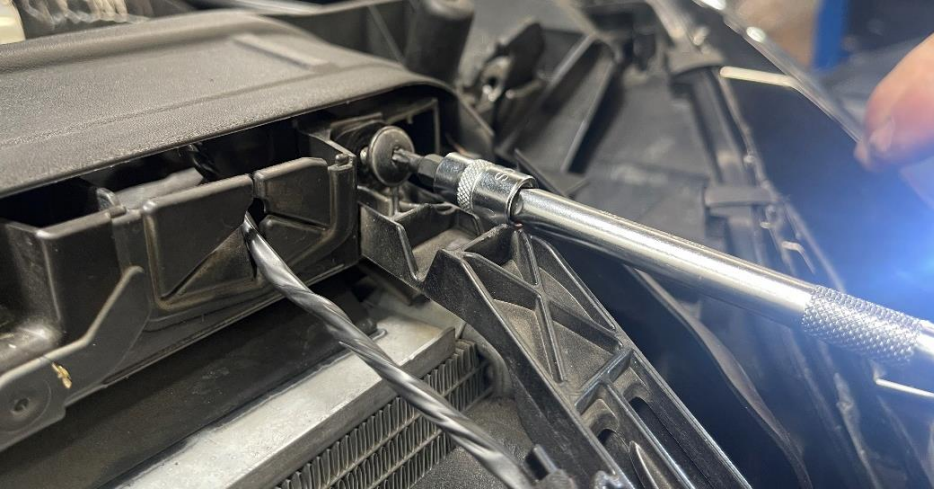
**Step 124**

Using a T30 Torx bit, remove the hardware from the radiator support brackets near the headlight.



Step 125

Using a T25 Torx, remove the hardware from the radiator support bracket.



Step 126

Using a T25 Torx, reinstall the hardware for the hood release bracket.



Step 127

Using a 10mm socket, reinstall the hardware securing the coolant line to the oil pan.



Step 128

Using a T30 Torx, reinstall the hardware for the coolant line brackets on the radiator support.



Step 129

Remove the studs from the crash bar mounting bracket.

Step 130

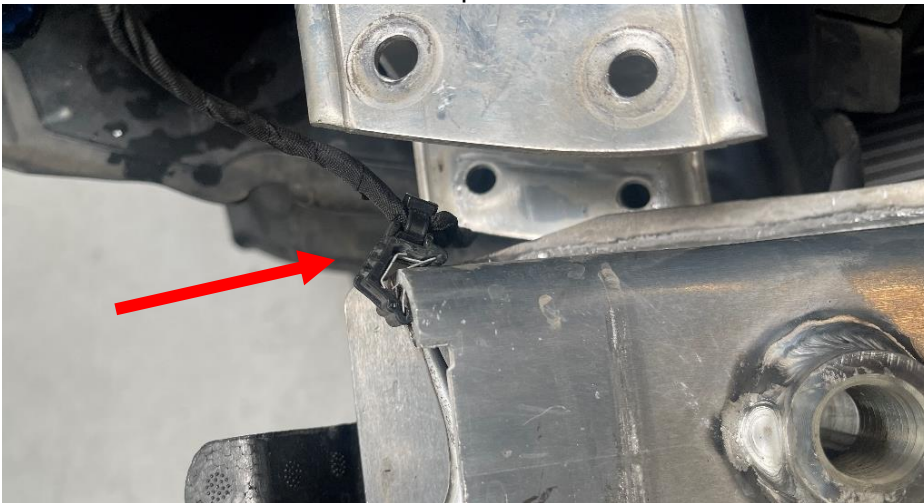
Using a 16mm socket, reinstall the hardware for crash bar mounting brackets.

**Step 131**

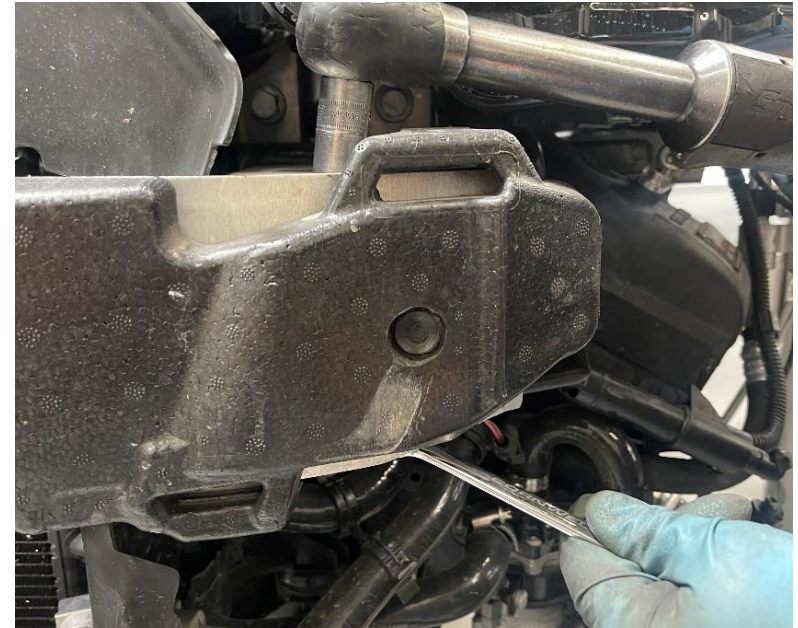
Reinstall the crash bar.

Step 132

Attach the harness clip from the crash bar.

**Step 133**

Using a 13mm socket and wrench, reinstall the hardware to the front crash bar.

**Step 134**

Connect the airbag sensor.



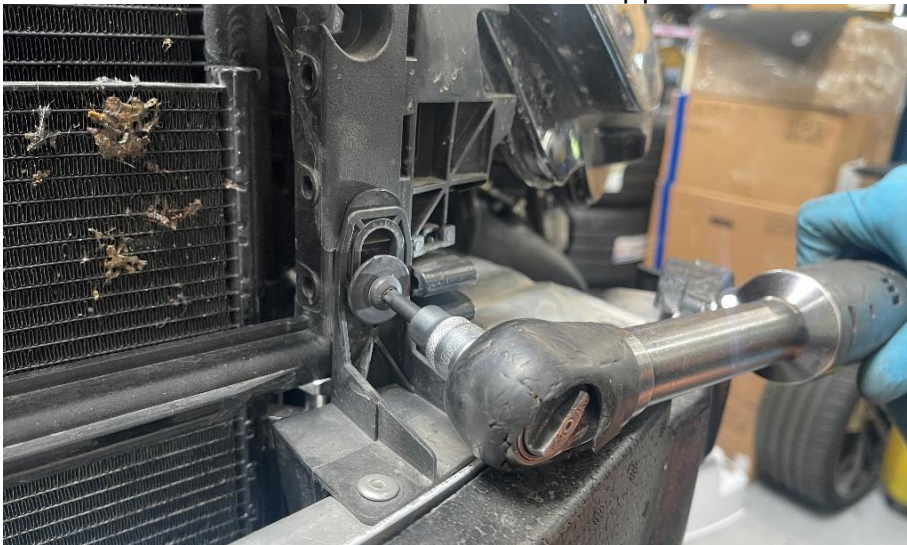
Step 135

Connect the headlight washer hose.



Step 136

Using a T30 Torx bit, reinstall the hardware securing the crash bar for the radiator support.



Step 137

Reinstall the upper air guides for the radiator support.



Step 138

Connect the headlight washer connector.



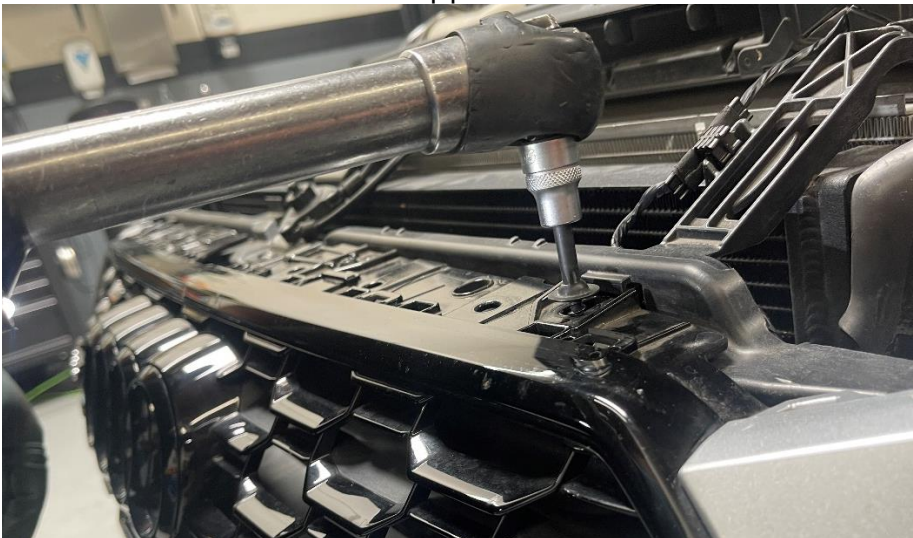
Step 139

Carefully reinstall the front bumper.



Step 140

Using a T30 bit, remove the hardware from the radiator support.



Step 141

Reinstall the airbox/air duct assembly into the engine bay.



Step 142

Using a flathead screwdriver, tighten the hose clamps on the coupler to the turbo inlet.

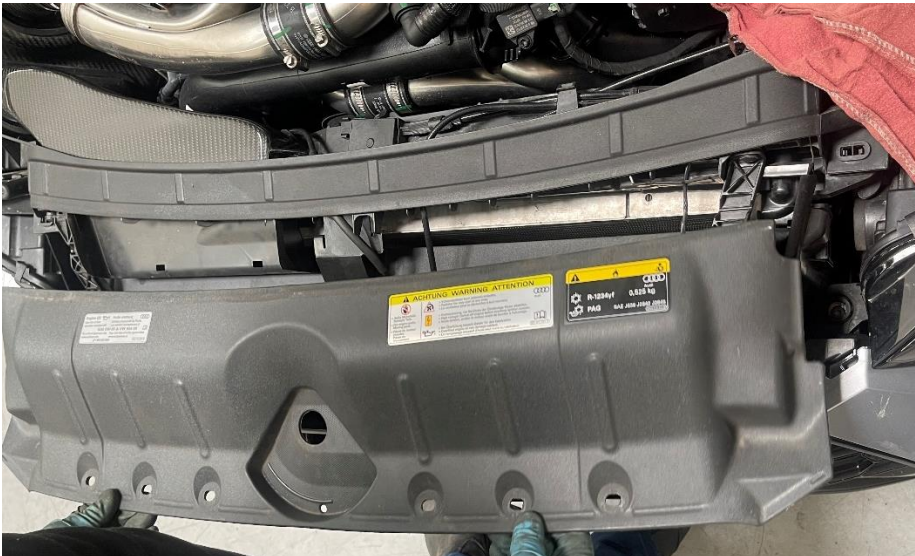


Step 143

Using a 4mm Allen, reinstall the hardware to the air duct.

**Step 144**

Remove the radiator cover.

**Step 145**

Reinstall the push clips for the radiator cover.

Step 146

Reinstall the hood release latch.

Step 147

Place the heat shield back over the engine and attach the hose clip.

Step 148

Using a 13mm socket, reinstall the ball mounts for the engine cover.



Step 149

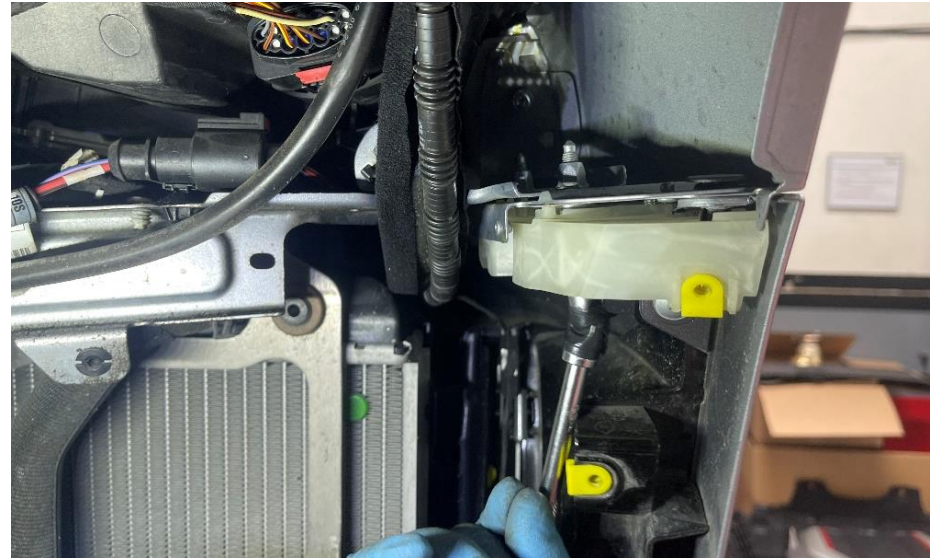
Reinstall the engine cover.

**Step 150**

Using a 10mm socket, reinstall the hardware into the back of the bumper support. (Ours has an Allen head bolt)

**Step 151**

Using a 10mm socket, reinstall the hardware connecting the front bumper to the fender.

**Step 152**

Reinstall the body clip near the bumper bolts.

Step 153

Reinstall the headlight drain tube onto the side trim panel.



Step 154

Using a combination of T30, T25, and a 10mm socket, reinstall the hardware for all the underbody trays. Start at the bumper and work your way back.

**Step 154 cont.**

Step 155

Put the fender liners back in place.



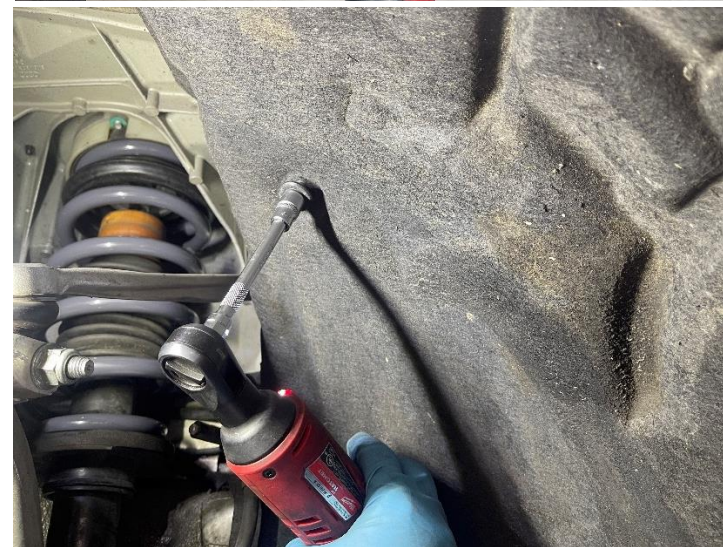
Step 156

Using a 10mm socket, reinstall the hardware for the axle guards.



Step 157

Using a combination of T25, T20, and a 10mm socket, reinstall the hardware for the wheel liners.



Step 158

Reinstall the front wheels.

Step 159

You're done. Finally! Enjoy the added effects of your stiffer motor mounts.

