



## VW CADDY 2K 2004-2011 AXLE OFFSET PLATES INSTALLATION



**Before starting this installation we advise you measure the difference between the centre of the wheel and the centre of the wheel arch to find the current offset of the wheel**

### **Tools Required:**

Vehicle lift or floor jack and axle stands.

10mm Spanner

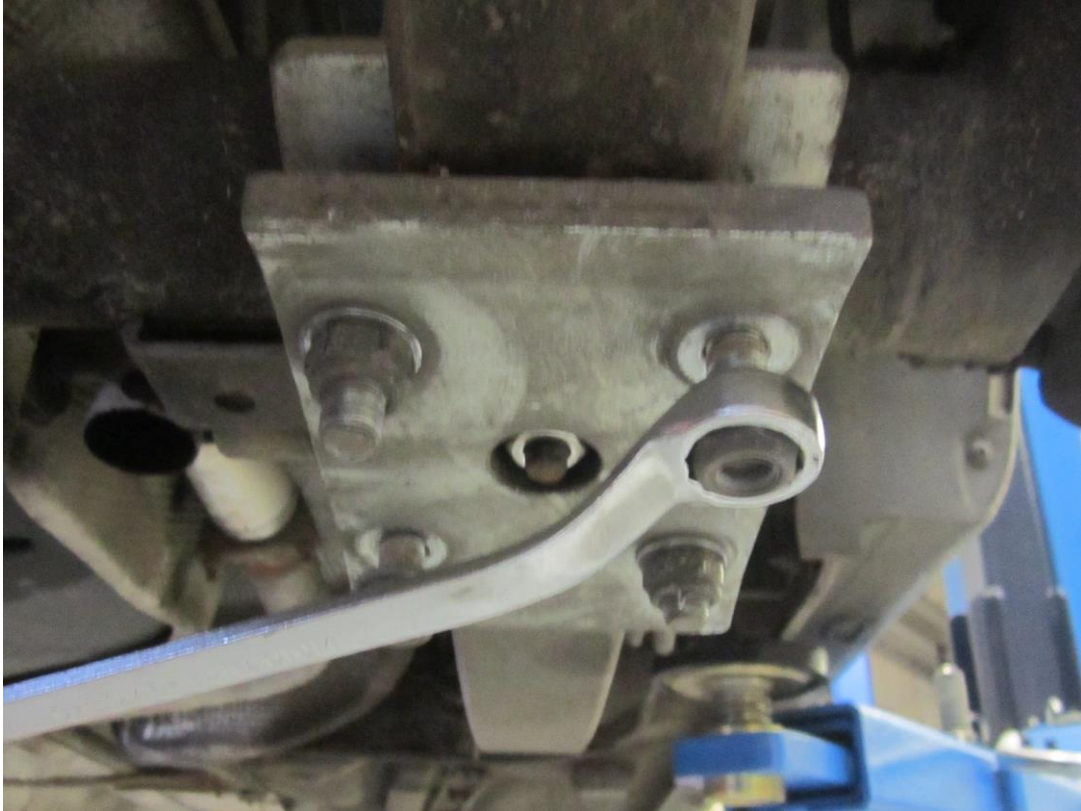
2x 18mm Spanner

19mm Spanner

Pliers

Safety eyewear, footwear and gloves are also recommended.

1. Raise the vehicle and remove both rear wheels.
2. Support the centre of the rear axle to allow access to both leaf springs.
3. These plates can be fitted individually up until Step 9.
4. Using an 18mm and 19mm spanner undo the 4 nuts and remove the plate leaving the bolts in place.



5. Using two 18mm spanners remove the bolt at the rear of the leaf spring as seen below.





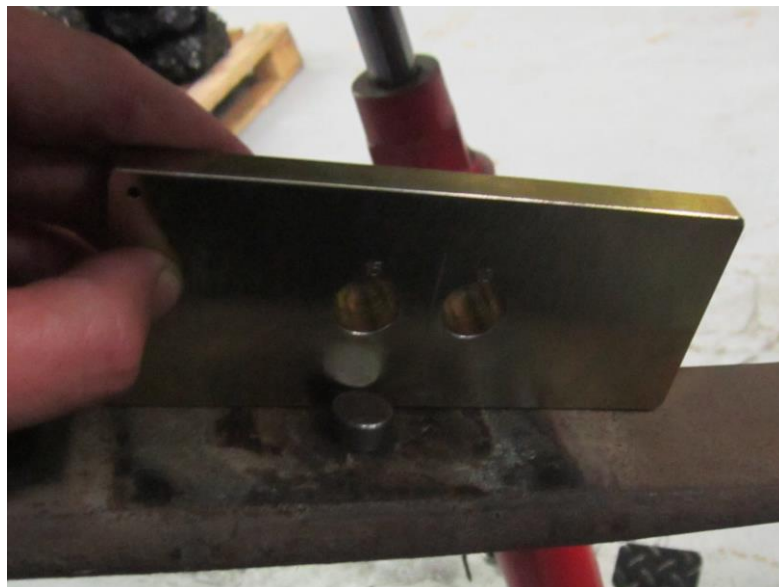
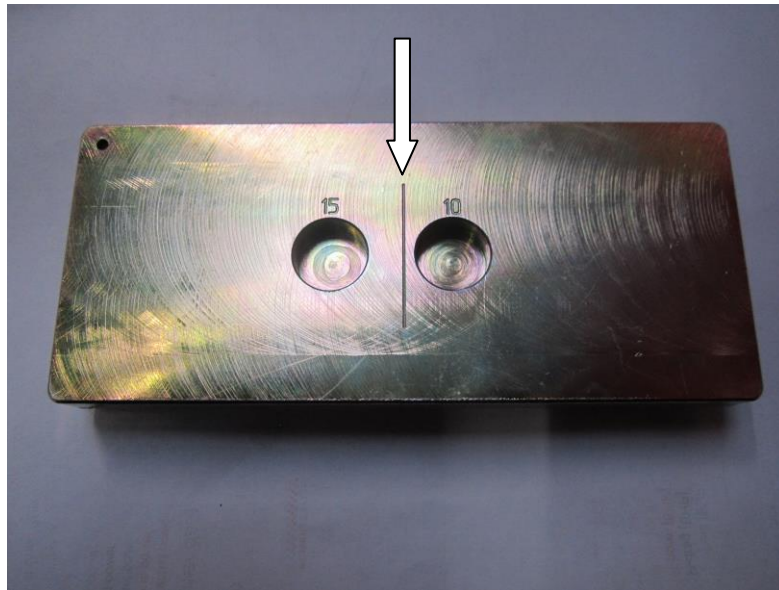
- Using a 10mm spanner and suitable pliers undo the nut and remove the location pin from the leaf spring.



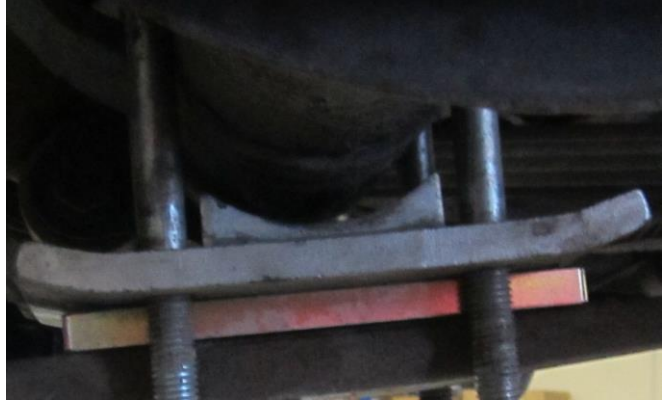
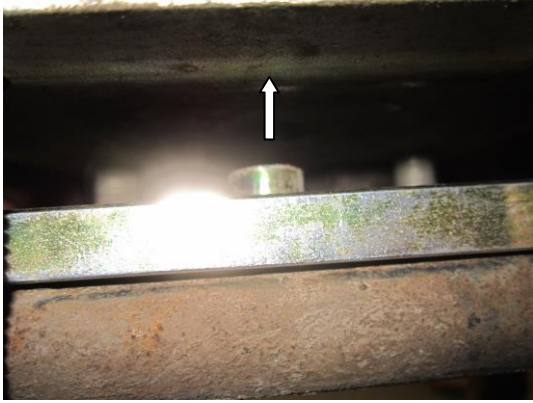
- Insert the supplied location pin in to the hole and tap it down to the shoulder.



- The hole in the offset plate to be used is determined by the measurement taken at the beginning of this installation. Position the offset plate ensuring the centreline mark is nearer to the rear of the vehicle than the hole being used.



9. With the offset plate in the correct position lift the leaf spring back into place ensuring the pin locates inside the hole. Refit the bolt at the rear of the leaf spring as seen in step 4.



10. Now refit the oem plate and the 4 nuts. Lower the caddy to the ground. You should now have a centred rear axle.

